

ENGenesis™ is a multi-patented bi-directional LTE Network operating within the 2/7GHz ENG BAS frequency band. It sets a new benchmark in ENG remote connectivity and mobility management

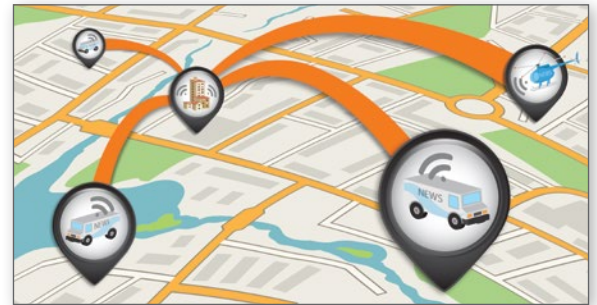
ENGenesis™ - "ENG with the LTE IP Edge"

ENGenesis™ is the next generation Electronic Newsgathering (ENG) system operating within licensed frequency bands. It enables the creation of your own private LTE IP network between your mobile units and your station. It offers the capability to use multiple ENG mobile units within the same ENG channel and multiple video feeds from the same mobile unit. The LTE IP Network provides a mobile network extension to your station with bi-directional communications, IFB, teleprompter, and intercom. ENG mobile units can seamlessly travel between Rx sites without losing data connectivity or requiring the utilization of antenna management from an operator. "It Just Works!"

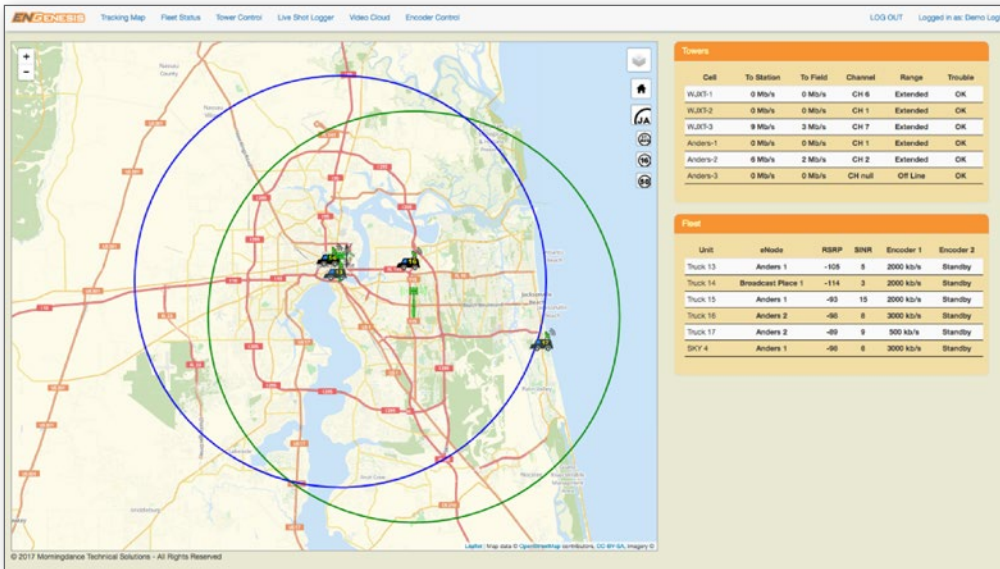
ENGenesis™- LTEvue Platform

The LTEvue user platform provides full network control and monitoring of the ENG mobile units from the station. It gives the user flexibility to choose what video source is distributed from the field to the station and streamlines the workflow of ingesting ENG feeds into the news automation system. Due to the simplified network design, the assistance of a person in the studio to establish your feed from the field is no longer required.

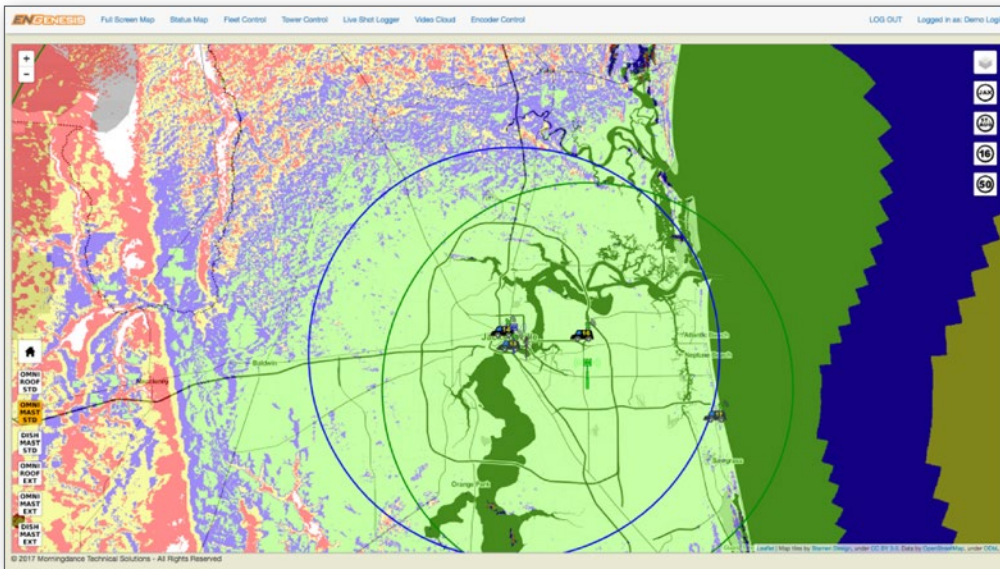
Running LTEvue in the station gives News Operations the capability to predict RF coverage performance before any ENG mobile vehicles are deployed to the scene. Advanced data capture capabilities allow you to store historical RF coverage shot metrics for future news planning and easy recall.



- **Customized software designed for your network**
- **Easy to use web-based interface for monitoring and remote control the entire ENGenesis LTE Network**
- **Multi-user**
- **Full capture of ENG fleet metrics for analysis**
- **Real-time view into operational status of each asset connected on the network**
- **Real-time mapping of ENG fleet asset location**
- **Live ENG shot logging function**
- **Real-time mouse over and RF coverage plots for instant analytics**
- **LiveShot Profit software** (option)
- **Video Cloud, an integrated private cloud file transfer solution** (option)



LTEvue customized geo-mapping allows an operator to view receive sites and vehicles' fixed or mobile locations in real-time. Integrated maps also give status connectivity on the network as well as signal strength and encoder bandwidth settings.



With a simple mouse click you can bring up the integrated RF coverage Plot Map to see what your signal performance will be before deploying your ENG vehicle to the scene.

For more info visit LTE4ENG.COM